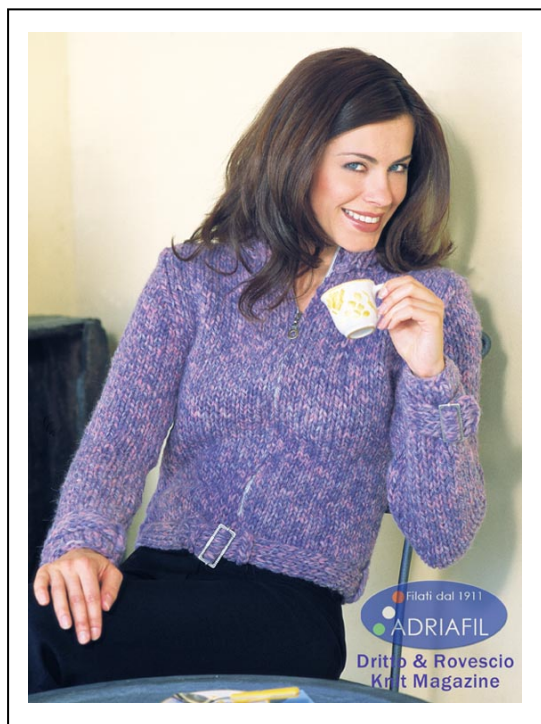


The “ Riccall ” Jumper



Selman's Creative Craft

UK	S	M	L
Chest	80	(84)	88 cm

Adriaafil Yarn - “ **New Zealand**” plain and/or multi

Yarn required : 5 (6, 6) x 100gm balls

Knitting needles 8mm

Crochet Hook 6 mm

3 x Metal buckles 5 cm

Zip 50 (51, 52) cm

Tapestry Needle

Tension – 11 sts and 14 rows = 10cm square in
st st using 8 mm needles.

Abbreviations :

rem - remaining
k - knit
p - purl
inc - increase
tog - together
alt - alternate

beg - beginning
dec - decrease
st (s) - stitch (es)
cont - continue
st st - stocking stitch
foll - following

Note : Yarn used double throughout.

Use same colour or a mix of colours,
Plain or multi as required.

Back:

Using 8 mm needles cast on 40 (42, 44) sts, work 15cm in st st.

Next row inc 1 st each end. Cont in st st until back measures 32 (33, 34) cms.

Shape armholes: Dec 1 st each end of next and foll 2 alt rows, keeping edge as follows; k1,
k2 tog, k to last 3 sts, k2 tog, k2. 36 (38, 40) sts.

Cont straight until armhole measures 19 (20, 21) cms. Cast off

Right Front:

Using 8 mm needles cast on 20 (21, 22) sts. Work 15cm in st st.

Next row inc 1 st at end of row. Cont in st st until front measures 32 (33, 34) cms.

Shape armholes: Row 1; k to last 3 sts, k2 tog, k1. Cont shaping as for back, 18 (19, 20) sts.
Work in st st until front measures 45 (47, 49) cms.

Shape neck: cast off 6 sts k to end. P 1 row. Next row; k1, k2 tog, k to end.

Work 2 more dec on alt rows. Cont until armhole measures same as back. Cast off.

Left Front:

Work as for right front, reversing shapings.

Sleeves:

Using 8 mm needles cast on 22 (24, 26) sts. Work in st st, inc 1 st at each end of 11th and every
10th row, 3 times 30 (32, 34) sts. Work straight until sleeve measures 43 (45, 47) cms.

Shape armhole: Cast off 2 sts at beg of next 2 rows. Keeping 1 st at each end as before, dec 1 st
each end of next and foll 7 alt rows, then on 4th row twice, 8 (10, 12) sts. Cast off.

Cuffs: (need two)

With 8 mm needles, cast on 8 sts and work in k1,p1 rib for 34 (35, 36) cms. Cast off.

Belt:

With 8 mm needles, cast on 8 sts and work in k1,p1 rib for 75 (77, 79) cms. Cast off.

Collar:

Sew shoulder seams. With right side facing and 8 mm needles starting at right front, pick up 16 (17, 18) sts, 13 sts across back, and 16 (17, 18) sts down left front; 45 (47, 49) sts. Work in k1, p1 rib for 13 cms. Cast off loosely.

Finishing:

Set in sleeves. Sew sleeve and side seams in one.

To make loops; using 6 mm crochet hook make 7, 10 cm chains. Attach loops: one vertically at centre back, one on each side seam and one on centre edge at front, 2 cm in from edge.

Place loops on sleeve seam 2 cms up from edge.

Thread cuffs and belt through loops and fit one buckle on each.

Fold collar in half on right side and sew side edges. Slip stitch long edge to neck.

Position zip between fronts and collar, sew in place.

